

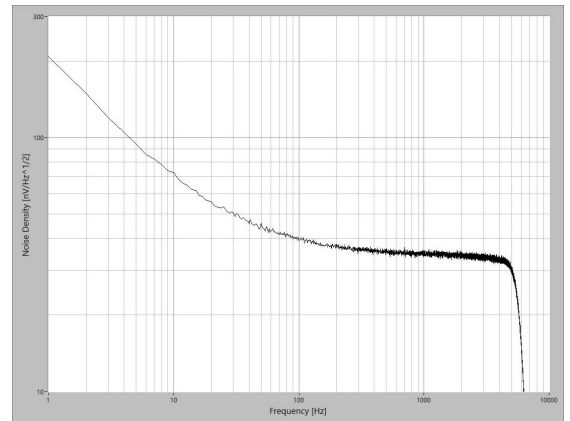
Active Three

The new generation of BioSemi EEG system

- ★ New ADC Technology
- ★ One Li-ion Battery type 18650
- ★ Prolonged battery life : 10 to 12 Hours
- ★ Seamless Auxiliary Sensors
- ★ WiFi, GSM DECT Bluetooth Tolerant



Active Three system is the third iteration of the successful line of BioSemi active electrodes systems. Based on the same basic set up of Active One and Two, with active electrodes: preamplifier integrated in the electrode, a compact battery powered AD-box, and data transfer to the acquisition computer via a single optical fiber.



The first important upgrade of Active Three is a change of Analog-to Digital Converter (ADC) technology, which offers a cleaner frequency spectrum.

Then, the second change is the use of novel low-voltage components, allowing the AD-box to run on half the supply voltage when compared to its predecessors. As a result, a much smaller and lighter battery could be used, leading to decreased size and weight.

The setup of the auxiliary sensors (response switches, respiration, temperature, etc.) was completely revised. Finally, the CMS/DRL circuitry was redesigned for improved interference suppression. The sum of these changes offers improved signal quality coupled with much easier handling and operation of the hardware and software.



Sales and support in South East Asia, China by **AWTC, Inc.**

AWTC, Inc. Tel: 886 2 2368 1696 Fax: 886 2 2368 4339 Email: sanjo@ms3.hinet.net